



# PRODUCT CATALOG

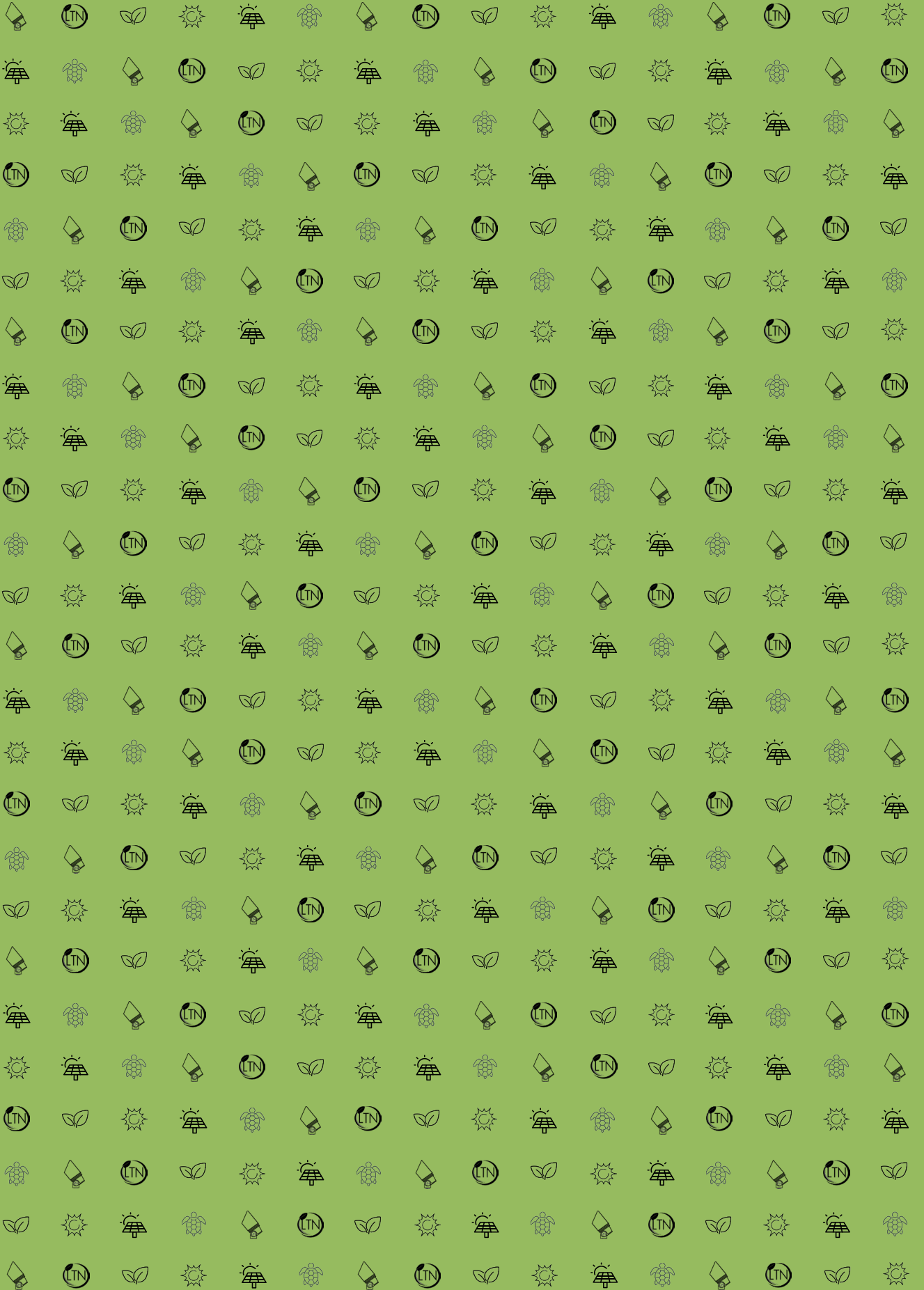


## LED LANDSCAPE LIGHTING SOLUTIONS FOR RESIDENTIAL AND COMMERCIAL APPLICATIONS

ENHANCE YOUR OUTDOOR LIVING SPACE WITH **LITE THE NITE** LANDSCAPE LIGHTING SOLUTIONS!

*Get **ON** with it!*

A small, realistic illustration of an LED light bulb, positioned at the end of the 'Get ON with it!' slogan.



**We are very proud of the Lite the Nite brands. We stand by our mission to provide superior electric components and service to benefit our clients, users, and associates.**

**Thank you for considering *Lite the Nite!***

- 6** Solar Power Supply
- 10** AC & DC Power Supplies
- 12** Uplights
- 14** Downlights
- 16** Pathlights
- 18** Hardscapes
- 20** Specialty
- 22** Accessories
- 24** LEDS
- 25** Certified Turtle Friendly





**RUPS**

*Renewable Universal  
Power Supply*

The background of the image consists of numerous thin, light gray lines that radiate from a single point on the left side of the frame, creating a fan-like or sunburst effect that fills the entire space. The lines are evenly spaced and extend towards the right edge.

READY. SET. SOLAR

# SOLAR POWER SUPPLY

**SOLAR  
POWERED!**

## USING SOLAR TO POWER ANYTHING LOW VOLTAGE!

### LOW VOLTAGE APPLICATIONS

- Landscape Lighting
- Security Camera/Alarm/Gate
- Electric Fence
- Roadway Signage (DOT)
- Construction Area Lighting
- Roadway Area Lighting
- Irrigation Controller
- Auto Livestock Feeder
- Emergency Power



**LTN1-300RUPS**



**LTN2-300RUPS**



**Battery:**  
300W  
Rechargeable Battery



**Timer:**  
Dusk to 2/4/6/8 hours



**Operating Temp:**  
-4° to 140°F

2022   
NEW PRODUCT  
CONTEST **Winner**  
Irrigation Association

SILVER | Landscape Lighting Category

# Renewable Universal Power Supply

Our award-winning Solar Power Supply system relies on the **SUN** for its power, and features a 300W Battery to power anything low voltage.

## INCLUDED:

### Solar Panel

- 50W "shadow proof" solar panel for enhanced chargeability

### Mounting Bracket

- **LTN1-300RUPS:** Expandable Heavy Duty Bracket,

Allows expansion to (2) 50W solar panels

- **LTN2-300RUPS:** Tenon Mount for Surface Mount or

2-3 in. Round Pole

### Stainless Steel Power Station

- 300W 15.8V 22.5 Ah Rechargeable Battery (Replaceable)
- Solar Controller Driver
- Timer with Photo Eye
- U-Bolts (if necessary)

## **SPECIFICATIONS:**

Solar Power Supply with 300W Battery  
2000 Charge Cycles or 5 years  
Operation Temp. Range -4°F to 140°F  
3 Year System Warranty

### TIMER OPERATION:

ON/OFF

Auto (full Dusk to Dawn)

Dusk to 2/4/6/8 hours

### OPERATION VOLTAGE:

Fully charged - 14.2 VDC

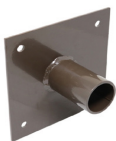
Dropout - 11.8 VDC



LTN-SL-SAL-BKT-ST-3-BK-G1  
3" square tenon bracket



LTN-SL-SAL-BKT-RT-3-BK-G1  
3" round tenon bracket



LTN-SL-SAL-BKT-WM-BK-G1  
Wall mount bracket

**(MORE BRACKET  
OPTIONS AVAILABLE  
UPON REQUEST)**

### LOAD CAPACITY - HOURS OF OPERATION\*

LOAD (WATTS)	28	35	47	71	143	285
HOURS	10	8	6	4	2	1

\*Based upon fully charged battery at 285W. Hours of operation will vary if battery is not fully charged. Recommended NOT to use full charge capacity daily to ensure operation after cloudy or cold weather days.

PRODUCT #	COMPLETE SYSTEM
<b>LTN1-300RUPS</b>	50W Solar Panel, Expandable Bracket, 300W Power Station & 10' Cable (U-Bolts if necessary)
<b>LTN2-300RUPS</b>	50W Solar Panel, 2 in. Tenon Pole Mount, 300W Power Station & 10' Cable, 2 U-Bolts
ACCESSORIES	
LTN1-50WSP	50W Solar Panel
LTN1-YCBL	Y-Shaped Extension Cable for Additional Panel
LTN1-RUPSCBL-10	10ft Cable for Panel
LTN1-RUPSUBOLT	U-Bolts
LTN1-300WBAT	300W Rechargeable Battery
LTN1-RUPSTMR	Power Station Timer

847.496.5276





Lite the Nite®



The background of the image is a repeating pattern of light gray, stylized leaves. The leaves are arranged in a way that creates a sense of movement and depth, with some appearing larger and more prominent than others. The overall effect is a clean, modern, and naturalistic design.

**Get *ON* with it!**



*Lite the Nite* continues to stay ahead of the curve with the industries most advanced power sources for controlling any low voltage landscape lighting systems. We offer AC and DC output options to best suit your particular application.



# POWER SUPPLIES

## AC TRANSFORMERS

AC offers a simplistic and economic way to power your system.



### LTN1100AC

100W AC Transformer  
 Suitable for smaller lighting projects  
 Digital photo eye programming  
 Manual ON/OFF  
 Dusk to Dawn/Dusk to 1-9 hours

### LTN2200AC/LTN2300AC

200W or 300W Transformer  
 12V-15V AC  
 Photocell/Timer/Astronomical clock/Manual  
 Overload LCD warning system  
 Circuit breaker protection  
 Quick connect taps  
 304 stainless steel housing



## DC POWER PACK

DC is the preferred choice for all LEDs. The AC to DC conversion is eliminated, allowing LED's to run more efficiently, thus increasing lifespan.



### LTN2150

*Direct hardwire capability to any home control system!*  
 Home Control 150W DC Power Pack (expandable up to 600W with additional box)  
 RF remote control system  
 200+ Watts Surge Capable  
 Flicker-free dimming  
 EMI free, Analog Linear  
 Rechargeable capacitor

DC Wire Run Recommendations

Wire Size	Total Wattage					
	20	40	60	80	100	135
16	215	110	70	55	40	30
14	350	175	115	85	70	50
12	550	270	185	135	110	80
10	870	440	295	220	175	125

Maximum recommended wire length based on wire size and total wattage.  
 The wire selection table provides a maximum voltage drop of 20%.  
 (Calculated for the Nite Driver and Lite the Nite LED fixtures.)



LTN2150 Remote

**Built-in 0-10V  
 dedicated  
 terminal for home  
 control direct  
 connect!**

# UPLIGHTS

Installed using Ground Stake (included) and aimed upward for wall wash and landscape highlighting. Uplights are the workhorse that define shape and details.



**BU132BZ**



**BUR101BZ**

# UPLIGHTS

## ALUMINUM



**AU110TBZ** (No LED)  
**AU115TBZ** (5W)  
**AU117TBZ** (7W)  
 Dimmable MR16 LED Optional  
 17°, 40°, & 60° spread



**AU110TBL** (No LED)  
**AU115TBL** (5W)  
**AU117TBL** (7W)  
 Dimmable MR16 LED Optional  
 17°, 40°, & 60° spread



**ACU210ABZ** (No LED)  
**ACU215ABZ** (5W)  
**ACU217ABZ** (7W)  
 Dimmable MR16 LED Optional  
 17°, 40°, & 60° spread



**AC110ABZ** (No LED)  
**AC115ABZ** (5W)  
**AC117ABZ** (7W)  
 Dimmable MR16 LED Optional  
 17°, 40°, & 60° spread - 12V  
 Ground stake included

## BRASS



**BU132BZ** (2.5W)  
 MR8 LED Included  
 175 Lumen - 3000K  
 80° spread



**BU110BZ** (No LED)  
**BU115BZ** (5W)  
**BU117BZ** (7W)  
 Dimmable MR16 LED Optional  
 17°, 40°, and 60° beam spread



**BUR106BZ**  
 6W - LED Included  
 316 lumens  
 3000K  
 Ground stake included  
 Linear, Clear, & Frosted Lens



**BUR101BZ**  
 11W - LED Included  
 819 lumens  
 3000K  
 Ground stake included  
 Linear, Clear, & Frosted Lens

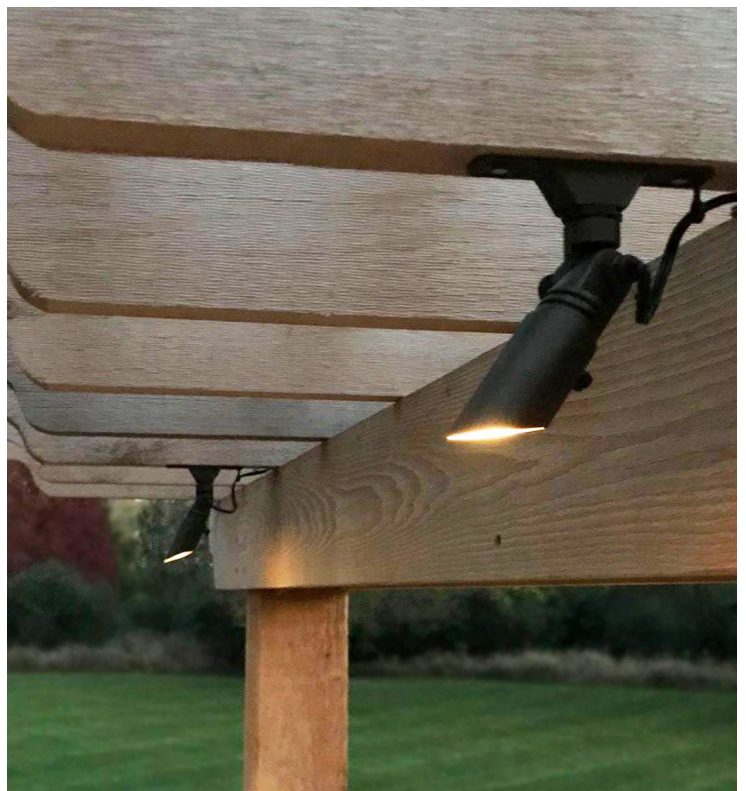


**BU1412BZ**  
 12W - Par36 Lamp Included  
 680 lumens  
 3000K  
 Ground stake included  
 25°, 45°, or 60° beam spread  
 Louvred Lens

# DOWNLIGHTS



Surface mounted downlights (mounting brackets available) are designed for subtle wall wash creating unique accents and drama. May also be wall mounted where up lighting is needed.



# DOWNLIGHTS

## ALUMINUM

**AD110TBZ** (No LED)  
**AD115TBZ** (5W)  
**AD117TBZ** (7W)  
 Dimmable MR16 LED Optional  
 17°, 40°, & 60° spread



AX1RNDDBSE  
 Included



AX1VRTBSE  
 Optional

**ACD210ABZ** (No LED)  
**ACD215ABZ** (5W)  
**ACD217ABZ** (7W)  
 Dimmable MR16 LED Optional  
 17°, 40°, & 60° spread



AX1ABSE-BZ

**ACD210WH** (No LED)  
**ACD215WH** (5W)  
**ACD217WH** (7W)  
 Dimmable MR16 LED Optional  
 17°, 40°, & 60° spread



White



AX1ABSE-WH

**ACD210BK** (No LED)  
**ACD215BK** (5W)  
**ACD217BK** (7W)  
 Dimmable MR16 LED Optional  
 17°, 40°, & 60° spread



Black



AX1ABSE-BK

## BRASS

**BD132BZ** (2.5W)  
 MR8 LED Included  
 175 Lumen - 3000K  
 80° spread  
 Base Included



**BD110BZ** (No LED)  
**BD115BZ** (5W)  
**BD117BZ** (7W)  
 Dimmable MR16 LED Optional  
 17°, 40°, & 60° spread  
 Base Included



BX1RNDDBSE  
 Included

# PATHLIGHTS



Installed using a ground stake, Lite the Nite pathlights provide a wash of light on ground surfaces such as garden beds, walkways, steps and low-lying landscape features. Add beauty and drama while creating a safer, well-lit environment.

[www.litethenite.com](http://www.litethenite.com)



# PATHLIGHTS

## ALUMINUM

Dimmable 4W LED and ground stake included  
 Integrated LED module  
 169 lumens - WW - 2800k  
 Level light output to 20% system voltage drop  
 36" SPT-2W 18AWG copper lead wire



22" ht



**AP136TBZ**  
**AP136TBZ-2**  
 6" cone shade

**AP148TBZ**  
**AP148TBZ-2**  
 8" tier shade

**AX1PHTBZ**  
 4W LED Light Array  
 Frosted Lens

## BRASS

Dimmable 4W LED and ground stake included  
 Integrated LED module  
 357 lumens - WW - 3000k  
 36" SPT-2W 18AWG copper lead wire  
 Includes clear and frosted lens



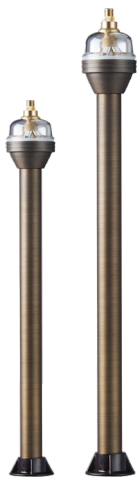
= Certified Turtle Friendly



**BP116BZ (22" ht)**  
**BP116BZ-2 (18" ht)**  
 6" dome shade

**BP126BZ (22" ht)**  
**BP126BZ-2 (18" ht)**  
 6" cone shade

**BP166BZ (22" ht)**  
**BP166BZ-2 (18" ht)**  
 6" pyramid shade



12" or 18" Stem  
 Lengths Available



**BX1PHABZ**  
 4W LED  
 Light Array



**BP118BZ (22" ht)**  
**BP118BZ-2 (18" ht)**  
 8" dome shade



**BP128BZ (22" ht)**  
**BP128BZ-2 (18" ht)**  
 8" cone shade



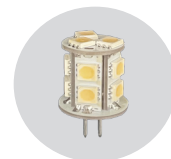
**BP156BZ (22" ht)**  
**BP156BZ-2 (18" ht)**  
 8" deep shade

## BLACK

Dimmable 2W LED and ground stake included  
 Integrated LED module  
 169 lumens - WW - 3000K  
 3' SPT-2W 18AWG copper lead wire  
 Frosted Lens



**BP1505BZ (19.5" ht)**  
 5" flat top hat



**L1523-13/5050 - 2W**  
 G4 BI-PIN Plug-In  
 Replaceable LED for  
 BP1505BK

847.496.5276

# HARDSCAPES



**Lite the Nite's** hardscape collection is an ingenious lighting option for projects involving decking, stairs, railings, walls, etc. built using just about any material - from wood, to brick, to stone. The slim profile allows for total concealment, yet provides a spray of light to brighten hardscapes. Our surface mount step lights are dimmable and install easily with no back box required.

[www.litethenite.com](http://www.litethenite.com)

# HARDSCAPES

## UNDERCAP

**AH1023BZ** (2W - Aluminum)

**BH1033BZ** (3W - Brass)

**Replaceable LED module**

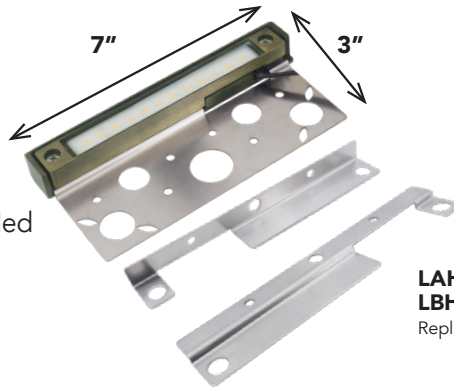
Under Cap and Linear mounting brackets included

3000K - Dimmable

Damp location listed

5 ft. SPT-1W 18AWG copper lead wire

Includes 2 (small) connectors - X1WPCS



**REPLACEMENT LED**

**LAH1023BZ** (2W - Aluminum)

**LBH1033BZ** (3W - Brass)

Replace LED without removing fixture!

## DECK



**BDL190BZ** (No LED)

**BDL192BZ** (2W)

2W 3000K Bi-Pin Disk LED

Included (L1923D)

## LINEAR



**BLH105BZ** (5W)

Mounting screws included

Integrated LED - Dimmable - 3000K

6ft. 18AWG copper lead wire



**BLH105BZ**

## STEP LIGHTS

Vertical surface mount - Dimmable

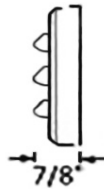
Integrated LED module - 3000K

10 year LED warranty

**NO BACK BOX REQUIRED**

5ft. SPT-1W 18AWG copper lead wire

ADA Compliant



**BST105BZ** (5W)

3" x 5" x 7/8"

51 Lumens



**BST106BZ** (6W)

2" x 9" x 7/8"

53 Lumens



**BST109BZ** (9W)

3" x 9" x 7/8"

90 Lumens



**Custom Back Plate Option**

Sized to your needs!

NOW AVAILABLE IN  
CUSTOM COLORS!



847.496.5276

19

# SPECIALTY



## WELL LIGHT



**BW110BZ** (No LED)  
**BW115BZ** (5W)  
**BW117BZ** (7W)  
MR16  
Available with 17°, 40°, or 60°  
spread

## SUBMERSIBLE



**BSU110NB**  
Great for backyard ponds & under  
waterfalls  
MR16  
Natural Brass  
30ft Insulated Lead Wire

## UP/DOWN LIGHT



**BUDS110BZ**  
(2) MR16 Dimmable LED Lamp  
Ordered Separately

## LINE VOLTAGE



**AC110ABZ-120** (120V)  
7W - GU10 LED Ordered Separately



# SPECIALTY

## POOL CAGE LIGHT

**BPC105RGB/WW-BZ**  
**BPC105RGB/WW-WH**

7W - BRASS

Dimmable, Integrated color-changing RGB & WW LEDs

10 ft Cord

Waterproof Connectors

Remote Included



## TIKI TORCH

**BPT177BZ**

Replaceable LED module

Stabilizer ground stake and brass cap included

6 FT (70.5 in.) - TOTAL HEIGHT

### TIKI TORCH FUEL



**X1TIKI-PLN** (Plain)

**X1TIKI-CIT** (Citronella)

**X1TIKI-LMEU** (Lemon Eucalyptus)



**BX1PHABZ**  
4W LED  
Light Array



**BPT177BZ**

847.496.5276

# ACCESSORIES

## WIRE & CONNECTORS



### CONNECTORS

Model	Description
<b>CONNECTORS</b>	
X1WPC	Waterproof Connector 20-pc pack
X1WPC-200	Waterproof Connector 200-pc pack
X1WPCM	MEDIUM Waterproof Connector 20-pc pack
X1WPCM-200	MEDIUM Waterproof Connector 200-pc pack



### WIRE

Model	Description
<b>WIRE</b>	
X1LW122	Low Voltage Wire 12/2
X1LW142	Low Voltage Wire 14/2 500'
X1LW142-50	Low Voltage Wire 14/2 50'



### GUTTER MOUNT

Model	Description
<b>BASES</b>	
SX1GMDB	Stainless Steel Gutter Mount



### TREELIGHT MOUNT

Model	Description
<b>BASES</b>	
X1TM7BZ	7" TreeLight Mount
X1TM4BZ	4" TreeLight Mount

## MOUNTING BASES

AX1RNDBSE

BX1RNDBSE

AX1VRTBSE



Model	Description
<b>BASES</b>	
AX1RNDBSE	3" Round Aluminum Surface Mounting Base
AX1VRTBSE	Aluminum Vertical Surface Mounting Base
BX1RNDBSE	3" Round Brass Surface Mounting Base

AX1ABSE-BZ

AX1ABSE-WH

AX1ABSE-BK



Model	Description
<b>BASES</b>	
AX1ABSE-BZ	Bronze Aluminum Architectural Base
AX1ABSE-WH	White Aluminum Architectural Base
AX1ABSE-BK	Black Aluminum Architectural Base
SX1GMDB	Stainless Steel Gutter Mount

# ACCESSORIES

## RISERS & STEMS

6" - 12" - 18"

Available in  
Aluminum or Brass



Model	Description
<b>RISERS</b>	
AX1RSR6TBZ	6" Aluminum Fixture Riser
AX1RSR2TBZ	12" Aluminum Fixture Riser
AX1RSR8TBZ	18" Aluminum Fixture Riser
AX1STM2TBZ	12" Aluminum Fixture Stem
AX1STM8TBZ	18" Aluminum Fixture Stem
BX1RSR6BZ	6" Brass Fixture Riser
BX1RSR2BZ	12" Brass Fixture Riser
BX1RSR8BZ	18" Brass Fixture Riser
BX1STM2BZ	12" Brass Fixture Stem
BX1STM8BZ	18" Brass Fixture Stem

## STAKES



**X1STK8**



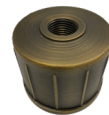
**BX1STK8**



**X1STKL8**



**X1HDSSTK**



**X1HDSSTK-BCAP**



**X1HDSSTK-ACAP**



**X1HDSSTK**

Model	Description
<b>STAKES</b>	
X1STK8	8" Plastic Fixture Stake
X1STKL8	8" Oversized Plastic Fixture Stake
BX1STK8	8" Brass Fixture Stake
X1HDSSTK	Heavy Duty PVC Stabilizer Stake
X1HDSSTK-BCAP	Optional Brass Cap for X1HDSSTK
X1HDSSTK-ACAP	Replacement Aluminum Cap for X1HDSSTK

# LEDS



## 5W/7W - MR16

LED Color Replacement Bulbs ● ● ●

Add a splash of color for special holidays. The 5-watt MR16 LED is replaceable. Create a festive highlight with red, green and blue bulbs (non-dimmable).

### LED Bulbs

Model	Wattage	Color Temp	Beam Spread
<b>MR16</b>			
L21521D	5W	2700K	17°
L21524D	5W	2700K	40°
L21526D	5W	2700K	60°
L21531D	5W	3000K	17°
L21534D	5W	3000K	40°
L21536D	5W	3000K	60°
L21541D	5W	4000K	17°
L21544D	5W	4000K	40°
L21546D	5W	4000K	60°
L21551D	5W	5000K	17°
L21554D	5W	5000K	40°
L21556D	5W	5000K	60°
L21731D	7W	3000K	17°
L21734D	7W	3000K	40°
L21736D	7W	3000K	60°
<b>MR16 Color</b>			
L115B4	5W	<b>BLUE</b>	40°
L115G4	5W	<b>GREEN</b>	40°
L115R4	5W	<b>RED</b>	40°



## 2.5W - MR8

Model	Wattage	Color Temp	Beam Spread
<b>MR8</b>			
L13238	2.5W	3000K	80°



## 12W - Par36

Dimmable

Model	Wattage	Color Temp	Beam Spread
<b>PAR36</b>			
L14123D-25	12W	3000K	25°
L14123D-45	12W	3000K	45°
L14123D-60	12W	3000K	60°

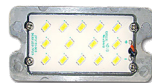


## 4W - Pathlight LED Array

Model	Wattage	Color Temp
<b>Pathlight LED Array</b>		
BX1PHABZ	4W	3000K
AX1PHTBZ	4W	2800K



**L10113D - 11W**  
3000K  
Dimmable Replaceable LED for BUR101BZ (see pg. 13)



**L1063D - 6W**  
3000K  
Dimmable Replaceable LED for BUR106BZ (see pg. 13)



**L1923D - 2W**  
**L192BD - BLUE**  
3000K or **BLUE** LED  
Dimmable LED GU4 BI-PIN ●



**LBH1033BZ - 3W**  
3000K  
Dimmable Replaceable LED for BH1033BZ (see pg. 19)



**L1523-13/5050 - 2W**  
3000K  
G4 BI-PIN Plug-In Replaceable LED for BP1505BK (see pg. 17)



# CERTIFIED TURTLE-FRIENDLY



**Lite the Nite** offers a full line of certified turtle-friendly landscape lighting fixtures and replacement lamps. The **Florida Fish and Wildlife Conservation Commission** has established guidelines for the use of lighting on and around important sea turtle nesting beaches. You can help protect these turtles, and their hatchlings, from lighting-induced disorientation by installing Lite the Nite's turtle-friendly lighting designed specifically in support of sea turtles and other beach dwelling wildlife.



## Pathlights

CERTIFICATION #2019-205



**BP118BZ-A**  
**BP118BZ-2A**  
8" Dome



**BP128BZ-A**  
**BP128BZ-2A**  
8" Cone



**BP156BZ-A**  
**BP156BZ-2A**  
8" Deep Cone

Brass fixtures, choice of 8" dome, cone, or deep cone style hat, choice of 12" or 18" stem, 12V AC Dimmable LED

## Step Lights

CERTIFICATION #2018-027

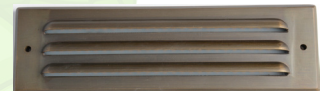
Brass fixture, choice of 5" x 3" (5W) or 9" x 3" (8W)  
12V AC Dimmable LED



**Custom Back Plate Option**  
Sized to your needs!



**BST105BZ-A**



**BST108BZ-A**

## Deck Light

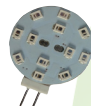
Brass fixture, 2W Dimmable LED  
**PENDING**



**BDL192BZ-A**

## LEDs

**AMBER COLORED**



**L192A**  
LED Disk  
2W G4 Bi-Pin  
CERTIFICATION  
#2019-206



**L115A4**  
LED 5W MR16  
CERTIFICATION  
#2019-207

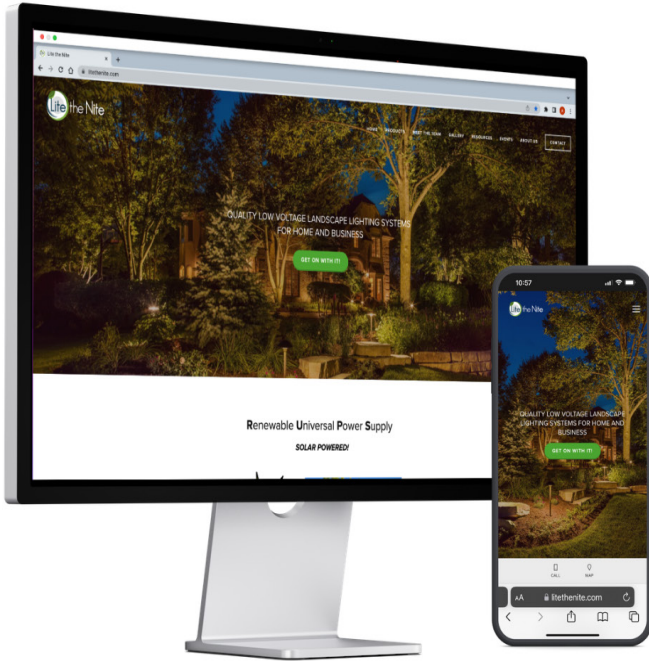


**BX1PHABZ-A**  
LED 4W  
Light Array  
CERTIFICATION  
#2019-205

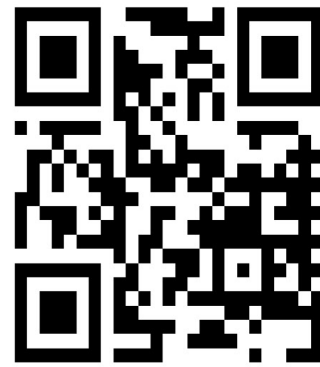
847.496.5276

# Lite the Nite®

Get **ON** with it!



**CONNECT WITH US  
ON OUR WEBSITE!**



**FOLLOW US ON SOCIAL MEDIA TO STAY UP TO DATE WITH LITE THE NITE!**



Lite the Nite



@ltnlandscapelighting



Lite the Nite

**MARKETING MATERIALS AND DISPLAYS  
AVAILABLE UPON REQUEST**

[www.litethenite.com](http://www.litethenite.com)





NOW LET'S.....  
**Get ON with it!**



BUSINESS CARD HERE



[info@litethenite.com](mailto:info@litethenite.com)  
+1 847.496.5276